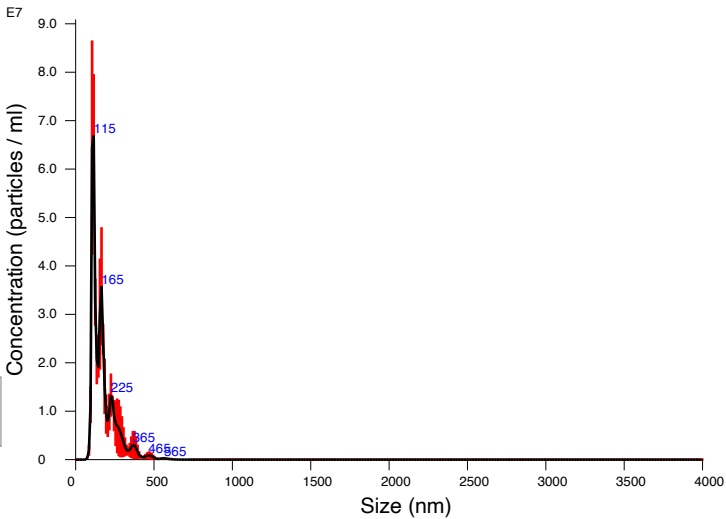


FTLA Concentration / Size graph for Experiment:  
Capture 2022-09-26 14-06-59



Averaged FTLA Concentration / Size for Experiment:  
Capture 2022-09-26 14-06-59  
Error bars indicate + / -1 standard error of the mean

<div><div>Included Files</div><div>Capture 2022-09-26 14-07-12 Capture 2022-09-26 14-07-58 Capture 2022-09-26 14-08-35</div><div><div>Details</div><div><div>NTA Version:NTA 3.4 Build 3.4.4</div><div>Script Used:SOP Standard Measurement 04-43-57PM 02~</div><div>Time Captured:14:06:59 26/09/2022</div><div>Operator:Ruth</div><div>Pre-treatment:</div><div>Sample Name:son. = 15s (1)</div><div>Diluent:</div><div>Remarks:</div></div><div><div>Capture Settings</div><div><div>Camera Type:sCMOS</div><div>Laser Type:Blue405</div><div>Camera Level:12</div><div>Slider Shutter:1200</div><div>Slider Gain:146</div><div>FPS:18.7</div><div>Number of Frames:374</div><div>Temperature:22.0 °C</div><div>Viscosity:(Water) 1.0 cP</div><div>Dilution factor:Dilution not recorded</div></div><div><div>Analysis Settings</div><div><div>Detect Threshold:24</div><div>Blur Size:Auto</div><div>Max Jump Distance:Auto: 8.5 - 9.2 pix</div></div></div></div></div></div>	<div><div>Results</div><div><div>Stats: Merged Data</div><div><div>Mean:174.3 nm</div><div>Mode:110.7 nm</div><div>SD:80.8 nm</div><div>D10:104.9 nm</div><div>D50:152.7 nm</div><div>D90:279.6 nm</div></div><div><div>Stats: Mean +/- Standard Error</div><div><div>Mean:172.9 +/- 10.5 nm</div><div>Mode:111.8 +/- 1.9 nm</div><div>SD:76.0 +/- 11.0 nm</div><div>D10:105.5 +/- 1.0 nm</div><div>D50:151.4 +/- 8.7 nm</div><div>D90:285.6 +/- 34.1 nm</div></div><div><div>Concentration:</div><div><div>4.51e+08 +/- 4.32e+07 particles/ml</div><div>24.6 +/- 2.4 particles/frame</div><div>26.5 +/- 2.6 centres/frame</div></div></div></div></div></div>
--	--